

V6

PRODUCT MANUAL
AUTOMOTIVE LED LIGHTING

ATTENTION

Thanks for using our products, please read the following terms before installation.

Installation Notice:

1. For DC 6-32v only.
2. Add CANBUS wire cable if has warning problem.
3. Do not stare at the lamp, it may cause eye pain or harm.
4. Do not touch the lamp, it will be hot after lighting up.
5. Keep the lamp out of children's reach.
6. Use the lamp according to the local law.

CANBUS Problem:

When replace the original halogen bulb with LED light, some vehicles may have CANBUS problem like flickering or abnormal light, etc.
Please connect suitable CANBUS decoder to solve the problem.

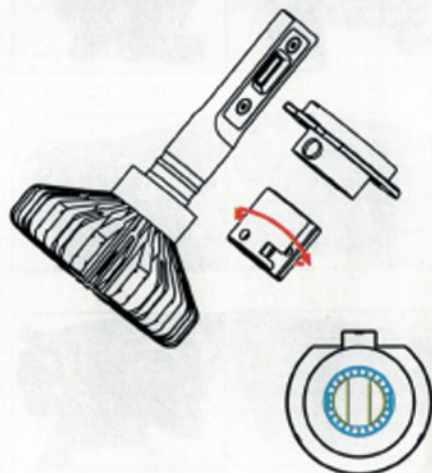
The following conditions are exceptions for warranty:

1. CANBUS problem : some vehicles may meet CANBUS problem like flickering, we can provide suitable CANBUS decoder to solve most problems.
2. Man-made reasons (like user modification/repair) lead to broken LED or wires, etc...
3. Installation problem: some vehicles may can not install our product because of small space or special adaptor.
4. Damages caused by irresistible natural disaster like earthquake, etc...
5. Beyond warranty period.



360° BEAM ANGLE ADJUSTABLE

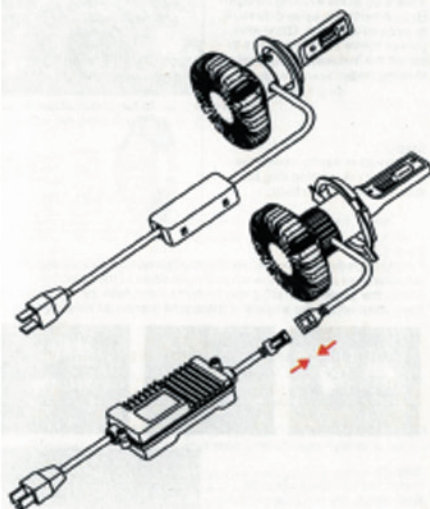
There are some cars need to adjust the beam angle for providing better lighting pattern, V6 unique adapter ring can provide 360° adjustable angle, (this function is only for single beam)



SPECIFICATONS

Items	V6 AUTO LED LIGHT
Voltage-in	DC 6-32V
LED Chip	Edison DF-4BS
Power	20W
Current	1.5A/13.5V
Heat Dissipation	Aluminum
Color Temperature	6000K
Work Temperature	-45~+85°C
Anti-EMI	S95I54EC
Non-Polarity	Single No. Hi/Lo Yes
PCB Material	Double-sided red copper
PCB Technology	Thermoelectric separation Technology
E-mark	E9-10R-05.11811
Life-span	>30000h
Available Models	Single: H1, H3, H7, H8, H9, H10, H11, H12, H16, JP, S202, PSX24W, 9006, 9006, 9012, D1-D4, PSX26W, P13W Hi/Lo: H4, H13, 9004, 9007

PRODUCT PICTURE

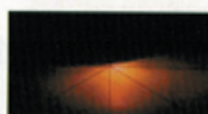


STANDARD LIGHTING PATTERN

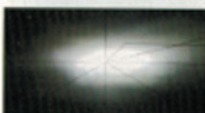
Original standard 15° cutting line for low beam, same as halogen bulb.
No glare or interference to other drivers, ensure driving safety, 6000K most suitable color temperature, wonderful light penetrability, Perfect focus and illumination on road.



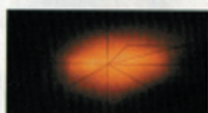
V6-Low Beam



Halogen-Low Beam



V6-High Beam



Halogen-High Beam

ATTENTION

Thanks for using our products, please read the following terms before installation.

Installation Notice:

1. For DC 6-32v only.
2. Add CANBUS wire cable if has warning problem.
3. Do not stare at the lamp, it may cause eye pain or harm.
4. Do not touch the lamp, it will be hot after lighting up.
5. Keep the lamp out of children's reach.
6. Use the lamp according to the local law.

CANBUS Problem:

When replace the original halogen bulb with LED light, some vehicles may have CANBUS problem like flickering or abnormal light, etc.
Please connect suitable CANBUS decoder to solve the problem.

The following conditions are exceptions for warranty:

1. CANBUS problem : some vehicles may meet CANBUS problem like flickering, we can provide suitable CANBUS decoder to solve most problems.
2. Man-made reasons (like user modification/repair) lead to broken LED or wires, etc...
3. Installation problem: some vehicles may can not install our product because of small space or special adaptor.
4. Damages caused by irresistible natural disaster like earthquake, etc...
5. Beyond warranty period.

INSTALLATION STEPS

As shown in the following figure :

1. Remove the original bulb connector, remove the original dust cover, remove the original halogen bulb.



2. Release bulb adaptor from V6 LED bulb (only for H1, H3, H4, H7, S202. D-series models) no need release adaptor for other models.



3. Install the V6 LED bulb adaptor by original bulb clips or pins.



4. Insert the V6 LED bulb body. Screw the V6 LED bulb body at right angle.



5. Connect the LED driver with bulb body, then connect with original bulb socket. Turn on car light to check lighting pattern. If working well, the installation is finished.



6. Install the original dust cover.

