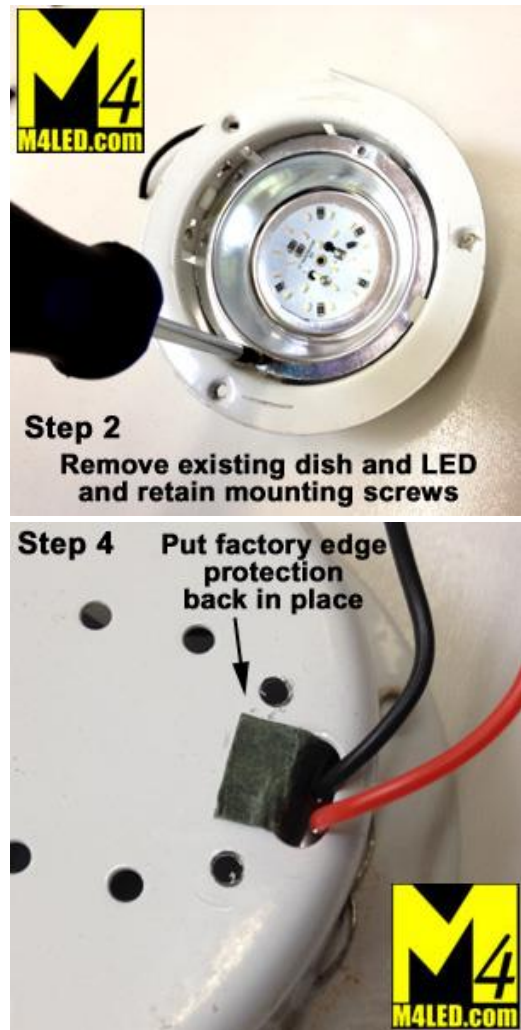


M4LED.com Retrofit Plate Installation – ITC Fixtures:

First, remove the fixture from the RV. After removing the lens cover, if you see screws on the fixture flange, remove them and drop the fixture. If there are no screws you have a spring-loaded fixture, simply pull down evenly on the fixture to remove it from the hole. Cut the wires to the coach close to the light so you have room to work with them.

Then Retrofit the LED Module to the Fixture as below:



After installing the module, strip the insulation back on the wires coming from the coach. The wires on the new module are non-polarity, so they can be attached to the RV wires either way, but commonly the coach will have a Black wire for power which can be attached to our Red wire, and a White Wire for ground which can be attached to our Black wire. Twist the wires together tightly then install the included wire nut. A little electrical tape over the wire nut can be added will ensure it will not come loose later.

Contact us with any questions at sales@m4led.com