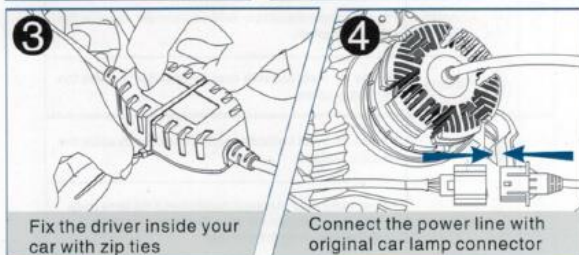
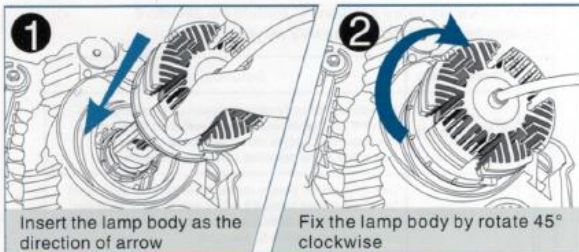


LED Headlight Kit Installation Additional Information

ULight Kits sold by M4Products.com

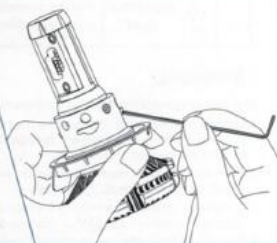
- LED Headlights install in the socket the same as the original headlight, consult your vehicle owners or shop manual on headlight replacement procedures. Due to many vehicle differences, we do not provide vehicle specific installation instructions.
- Black Heatsink on back of LED must be in open air. It can be reversed for better fit if necessary
- Driver box can be affixed to clean solid surface with double sided tape, or hung from the vehicle harness with zip ties.
- Ensure driver electrical connections are screwed in completely to keep water out of connection.
- Ensure a good clean tight connection to the vehicle harness. Tape or zip tie if necessary to hold the connection tight. This is the most common issue with installation trouble.
- In most cases, there is no alignment necessary as the LED sits in the same location as the original bulb in your factory housing. If necessary, your housing can be adjusted per your vehicle manufactures recommended procedure. Some models of LED are also adjustable for position with click turns, or by loosening the collar with a hex key and repositioning.
- In general, when installed, the LEDs will point out the side of the light. If the LED has a protrusion near the LEDs to block some low beam light, the protrusion will be above LED.
- In general, proper light alignment is for the headlights to point slightly to the right, and lower on the left side of the road, this keeps the lights out of the eyes of oncoming drivers.
- Keep one of your stock bulbs as a spare in the event of a failure as a replacement module will take more time to procure.

**H8/H11/H16JP/H13/P13/9004
9005/9006/9007/9012/PSX26**



Tips

Please unscrewed the screw to adjust lighting pattern if needed



9004 and 9007 Headlight Additional Installation Tips.

- Many 9004 and 9007 Headlights use a retaining collar to hold the bulb in place.
- Reuse the Factory Collar, or replace with a Slim Collar such as a Dorman #42415.
- If using the factory collar, you may need to trim it down in length to clear the LED heatsink. This can be done with a fine-tooth hacksaw or rotary tool.
- To install the collar, you will remove the front flange on the LED bulb. There is a small hex screw that positions the flange, remove the flange and pull the flange off the front of the LED.
- Install the collar, then replace the flange. Note that the flange can be install in four different positions, position the flange so that when the light is back in the fixture, the LEDs face left and right, not up and down.

PRODUCT SPECIFICATION

Input Power	L/25W,H/25W
Operating Voltage	DC9-32V
Luminous Flux	L/6000LM,H/6000LM
IP Rate	IP67
Light Source Model	ZES Chip
Color Temperature	3000K/6500K/8000K
Heat Dissipation Theory	Aviation aluminum 7
Operating Life	>30000hrs
Operating Temperature	-40°C ~ +80°C

